



CAMPER & NICHOLSONS YACHTS



GELYCE 80'



“I have always been fascinated by the history of Camper & Nicholson’s.
When looking at the J Class yachts such as Endeavour, Velsheda and Shamrock, I was entranced by the elegance and style of these masterpieces so much so that I was immediately inspired to apply these values to power boats.
As a passionate sailor, these yachts have been a constant inspiration as we developed the commuter line for C&N which is a sign of commitment to the unique history of this extraordinary company”.

Leonardo Ferragamo, President of Nautor Holding

C&N, established in 1782, is one of the most significant and glamorous contributors to the history of yachting.
The Company’s continued commitment to innovation, quality, reliability and most importantly style will lead yachting into the 21st century.
C&N Yachts is part of Nautor Holding, which includes Nautor’s Swan and Marina di Scarlino.



GELYCE 80'

THE CONCEPT

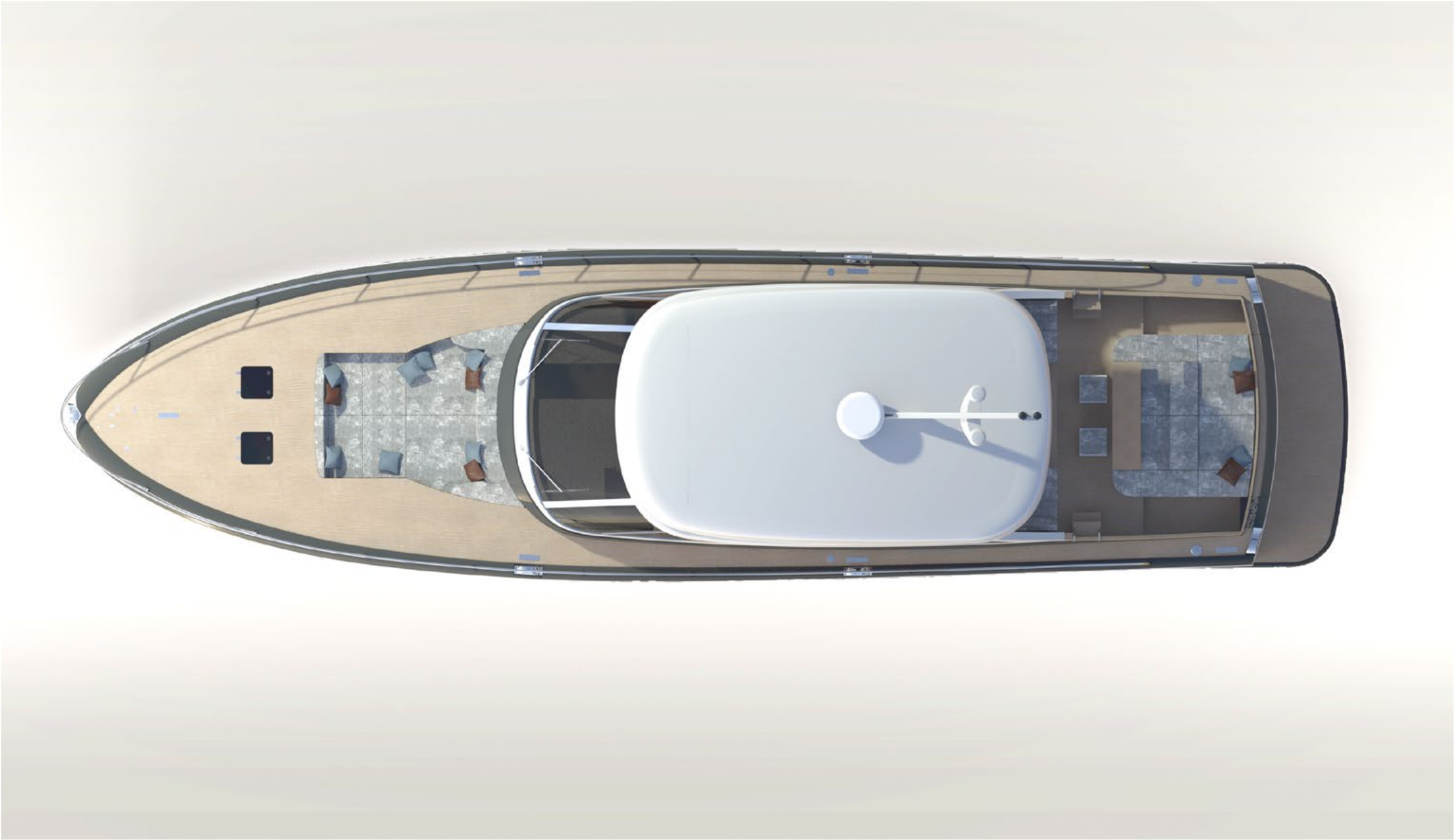
Gelyce 80' has been developed along the same conceptual lines as the *Velsheda 50'* and *Shamrock 60'*, offering a large, comfortable covered area outside in the cockpit and a large space for sunbathing. The name *Gelyce* is derived from the famous series of C&N fast commuters built in the thirties to give support to the J Class sailing yachts that attended the America's Cup.

Gelyce 80' layout features a large owner's cabin and two double berth guest cabins, all with en suite bathrooms. Forward of the cabins there is a spacious galley and dinette, with two crew cabins, each one with two bunk beds and a bathroom, located in the bow area. The main deck includes a very large living and dining area and the fully equipped helm station. Stepping outside from the air conditioned main deck you enter a spacious cockpit equipped with comfortable settees and an aft sunbed. Forward of the superstruc-

ture you enter a recessed cockpit equipped with cushions, tables, a retractable windscreen and a foldable canopy. This multifunctional area can be utilized as a sunbed, a place to enjoy the breeze and shade or the perfect location to spend the evening under the moonlight.

Gelyce 80' features a deep "V" planning hull design, incorporating resin infusion laminating system to ensure outstanding sea keeping abilities, as well as low fuel consumption. The boat has an overall length of 23,65 m (78'), and has two engine options, one for long range capabilities (MAN V8 – 1000/735 kW) with a cruising speed of 22 knots, and one for those with the desire to cover more distance at a faster pace (Caterpillar C32 – 1622/1193 kW) and a cruising speed of 32 knots. A garage, under the sundeck area aft, is designed to contain the optional 3,20 m tender to *Gelyce 80'*.







GELYCE 80'

TECHNICAL DATA*

Length Overall	23.65 m - 64'8"
Beam	6.10 m - 18'
Draught	1.15 m - 3'7"
Fuel tank capacity	6.000 liters
Water tank capacity	1.500 liters
Water tank capacity	300 liters

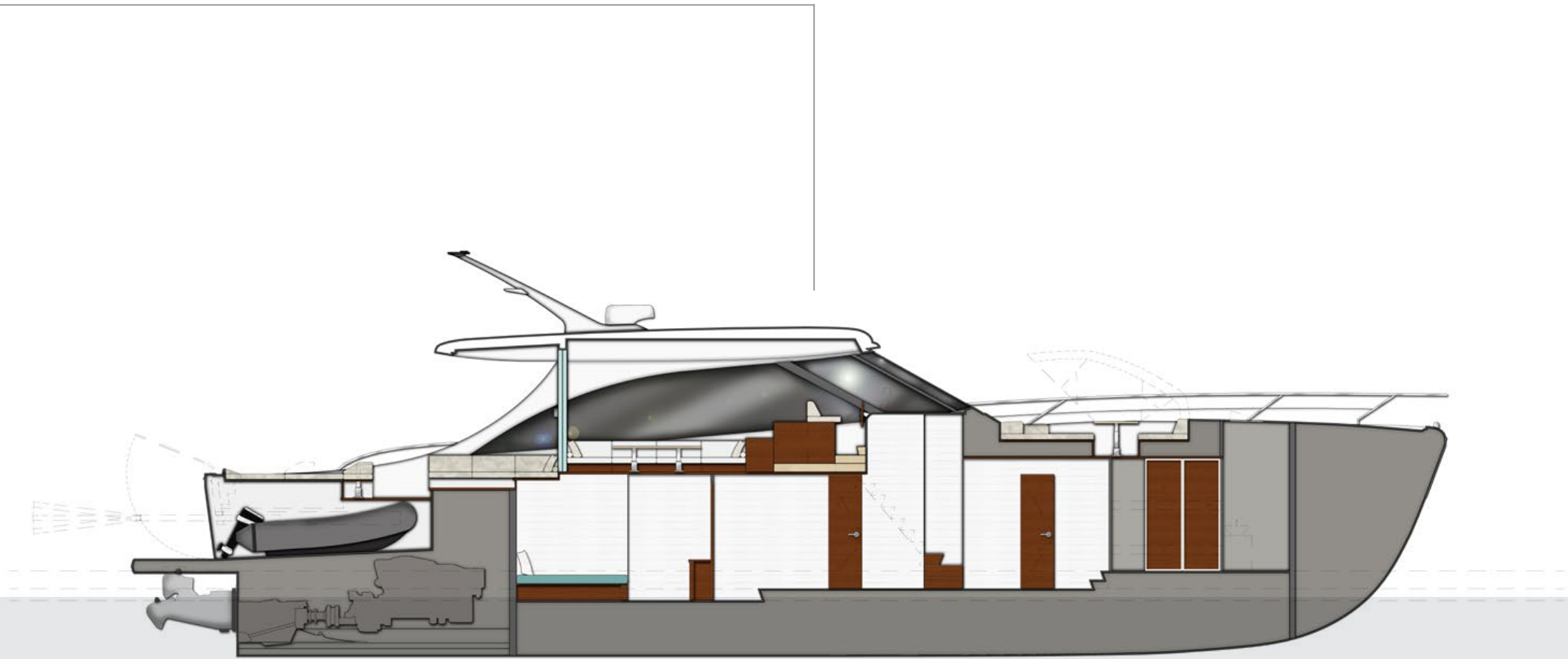
Version	Fast Range
Engines	2 x Caterpillar C32 1,670 hp @ 2,300 RPM
Max Power	1193 kW
Speed**	Cruising 29 knots (1/3 laden) Maximum 33 knots (1/3 laden)

Version	Long Range
Engines	MAN V2 - 1000
Max Power	735 kW
Speed**	Maximum 22 knots (1/3 laden)

* Preliminary technical specification not binding

** Performances are estimated at calm sea, absence of wind, 25°C air temperature, clean hull and propellers and load as indicated.

Range is calculated considering fuel consumption data stated by the engines constructor.



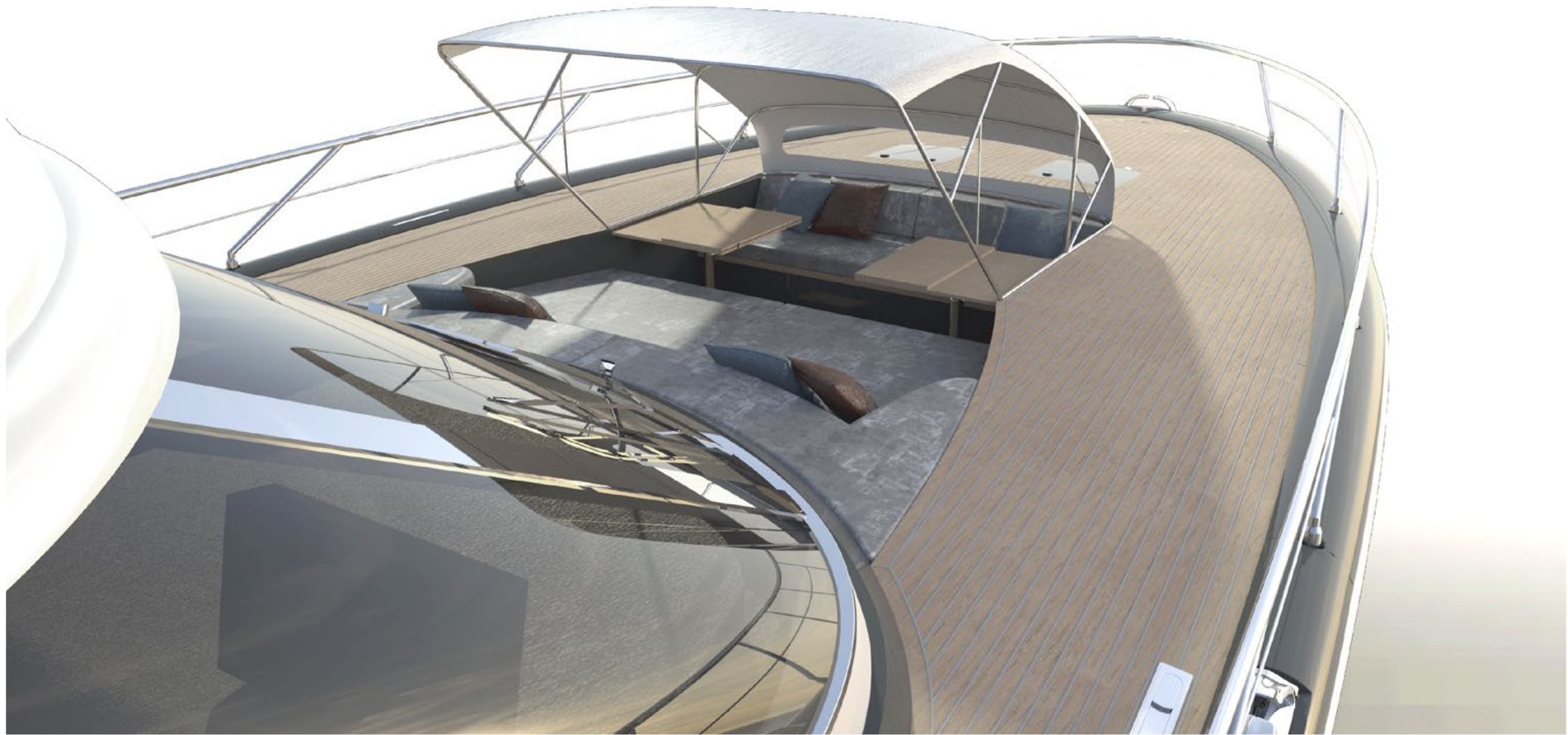
GELYCE 80'

Main deck



Lower deck







This catalogue contains non-contractual descriptive information about Camper & Nicholson's Yachts including drawings, photographs as well as other data. All such information is subject to change at any time without prior notice and does not represent an exact description of any particular yacht. Photos or diagrams could include special equipment that is not part of the equipment supplied by the boatyard. All the information, figures, photographs and data provided in this catalogue are exclusive copyright, industrial property right and property of Camper & Nicholson's Yachts Srl.

